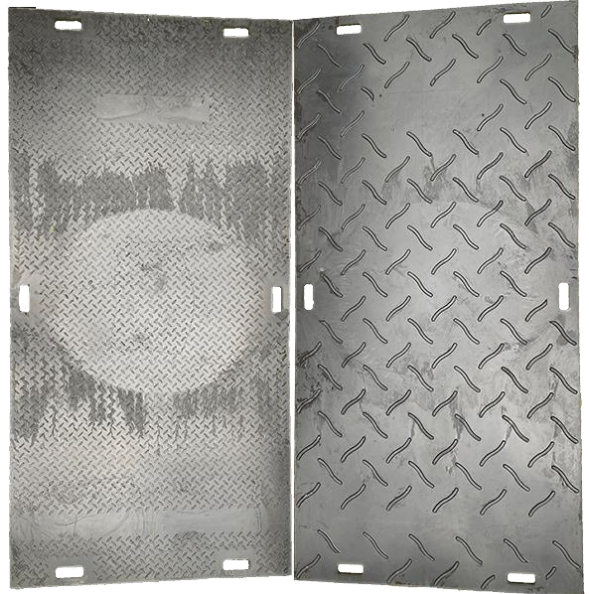


Ground Protection Mats

4 x 8 Double-Sided



Size	4' x 8' x 0.5" (120 cm x 240 cm x 15 mm)
Weight	88 lb (40 kg)
Anti-Slip Pattern	2 Sides
Load Bearing	50 ton
Price	\$249 per item
In Stock	Yes
Properties	Perfect traction on grass and mud. Handles machinery of any size.



4 x 8 One-Sided

Size	4' x 8' x 0.5" (120 cm x 240 cm x 15 mm)
Weight	88 lb (40 kg)
Anti-Slip Pattern	1 Side
Load Bearing	50 ton
Price	\$199 per item
In Stock	Yes
Properties	Smooth side faces hard surfaces for good traction and to avoid damage. Handles machinery of any size

2 x 8 Double-Sided



Size	2' x 8' x 0.5" (60 cm x 240 cm x 15 mm)
Weight	44 lb (20 kg)
Anti-Slip Pattern	2 Sides
Load Bearing	25 ton
Price	\$149 per item
In Stock	Available after Oct 25
Properties	Used for lighter machinery such as skid steer or machinery with wide wheel base.

Connectors

Rubber Connectors for 4 x 8 Double-Sided Mats

Price \$15 per item

Properties Ultimate stability on uneven surfaces

Recommended Quantity 2x number of mats



Metal Connectors for 4 x 8 Double-Sided Mats



Price \$5 per item

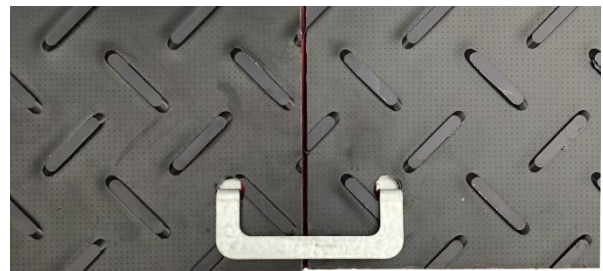
Properties Fast to assemble

Recommended Quantity 2x number of mats

2-Way Connectors for 4 x 8 One-Sided Mats

Price \$3 per item

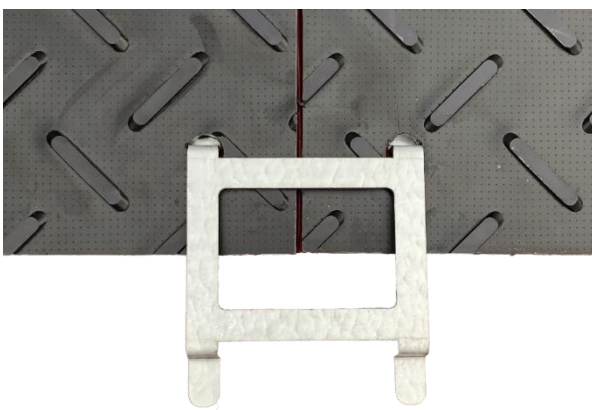
Recommended Quantity 2x number of mats



4-Way Connectors for 4 x 8 One-Sided Mats

Price \$5 per item

Recommended Quantity Same as number of mats



FAQ

Delivery

Free Delivery available across GTA for orders of 10+ mats. For all other areas please contact us for a quote. After order is submitted, we will contact you to schedule a delivery.

Pickup

Please contact us if you wish to schedule an order pickup. Pickup available at our storage in Aurora, ON

Payment

We accept Interac e-Transfer, Credit Cards as well as cash or check upon delivery/pickup

Material

Mats are made of recycled high-density polyethylene (HDPE). It is extremely durable, firm, and eco-friendly material that allows mats to have long service life and handle heavy loads

Color

Mats are available only in black color

Warranty

All mats have a limited 5 year warranty which covers defects and cracks caused by regular use. Damage caused by abusive use and wear of treads are not covered.

Discounts for Bulk Orders

We do offer discounts for order of 10 mats or more. Please contact us for special pricing and we will send you a customized quote.

Can Mats Be Stored Outside?

Absolutely. Heat, cold, and moisture will not damage mats so they can be stored outside all year round.

Can Mats Be Carried In a Pickup Truck?

You will need the straps in order to fixate the mats in your truck's bed. Most pickup trucks' beds are not long enough to load 8' mats so the bed cover will have to remain open.